



<b>Engine</b>	Cummins L9PLUST3
<b>Rated Power</b>	200 kW (268 hp / 272 ps) @ 2,200 rpm
<b>Blade Width</b>	4,270 mm
<b>Maximum Speed</b>	44 km/h
<b>Draw Bar Pull</b>	112 kN
<b>Operating Weight</b>	20,500 kg

# 4260D MOTOR GRADER

# 4260D SPECIFICATIONS >>>

ENGINE	
Emission Regulation	Tier 3 / Stage III
Manufacturer	Cummins
Model	L9PLUST3
Rated Power	200 kW (268 hp / 272 ps) @ 2,200 rpm
Maximum Torque	1,245 N·m / 1,200-1,600 rpm
Number of Cylinders	6
Aspiration	Turbo & air-to-air intercooled

TRANSMISSION	
Transmission Type	Power shift
Torque Converter	Single stage, three elements
Maximum Travel Speed, fwd	44 km/h
Maximum Travel Speed, rev	32 km/h
Number of Speeds, fwd	6
Number of Speeds, rev	3

AXLES	
Differential Type	Limited slip standard
Final Drive Type	Chain drive
Axle Oscillation	±16°
Front Axle, Wheel Lean Angle	Left / right 18°

STEERING	
Steering Configuration	Load sensing steering
Steering Relief Pressure	16.7 MPa
Minimum Turning Radius	7,500 mm
Steering Angle	±50°
Frame Articulation Angle	±27°

BRAKES	
Service Brake Type	Dual circuit Wet brake
Service Brake Location	Rear axle

TIRES	
Tire Size	20.5-25

HYDRAULIC SYSTEM	
Main Pump Type	Piston
Main Relief Pressure	21 MPa
Main Pump Flow	158 L/min

WORKING CAPACITIES	
Maximum Draw Pull	112 kN
Cutting Pressure	9,900 kg

TANDEM DRIVE PERFORMANCE	
Height	670 mm
Width	215 mm
Center Distance	1,696 mm

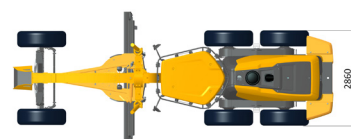
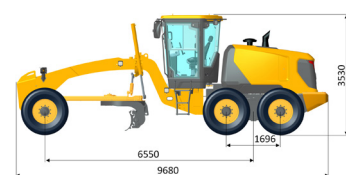
MOLDBOARD PERFORMANCE	
Bank Cut Angle	28~71°
Moldboard Lift Above Ground	570 mm
Moldboard Side Shift, left/right	465 / 933 mm
Maximum Sloping Angle	90°
Cutting Depth	838 mm
Circle Rotation	360°
Circle Diameter	1,576 mm
Circle Thickness	150 mm

DIMENSIONS	
Wheelbase	6,550 mm
Overall Length	9,680 mm
Overall Width	2,860 mm
Overall Height with Cab	3,530 mm
Clearance under Front Axle	545 mm
Moldboard Standard Length	4,270 mm
Moldboard Standard Thickness	19 mm
Moldboard Standard Height	610 mm

OPERATING WEIGHTS	
Operating Weight	20,500 kg

SERVICE CAPACITIES	
Fuel Tank	480 L
Engine Oil	21 L
Cooling System	38 L
Hydraulic System	125 L
Transmission and Torque Converter	27 L
Tandems, each	75 L

OPTIONAL EQUIPMENT	
Rear Ripper	
Worm Gearbox with Friction Disc	
Automatic Leveling System	
Rotary Beacon	
Front Dozer	



Guangxi Liugong Machinery Co., Ltd.

No. 1 Liutai Road, Liuzhou, Guangxi 545007, PR China  
T: +86 772 3886124 E: overseas@liugong.com  
www.liugong.com

Specifications and designs are subject to change without notice. Machines shown may include optional equipment. Liugong standard and optional equipment may vary from region to region. Please consult your Liugong dealer for information specific to your area. Engine power kW is converted to horsepower (1 kW=1.3596 ps and 1 kW=1.3410 hp) in this file.

01/2024 Designed by LiuGong